

EXAMINATIONS COUNCIL OF ESWATINI  
Junior Certificate Examination

CANDIDATE  
NAME

--

CENTRE  
NUMBER

--	--	--	--

CANDIDATE  
NUMBER

--	--	--	--

**AGRICULTURE**

**516/02**

Paper 2

**Specimen October/November 2024-2026**

**Total marks: 100**

**1 hour 45 minutes**

**READ THESE INSTRUCTIONS FIRST**

Write your name, centre number, and candidate number on the answer sheet provided.

This paper consists of **two** sections. **Section A** and **Section B**.

**Section A** consists of **12** structured questions worth **70** marks.

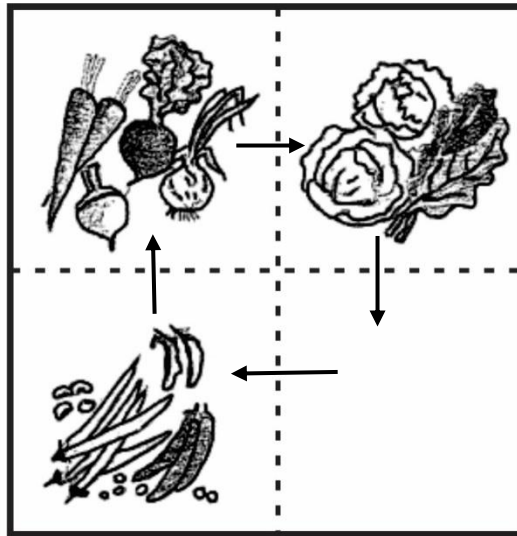
**Section B** consists of **three** essay questions of which you are expected to answer any **two** essays worth **15** marks each.

<b>FOR OFFICIAL USE</b>		
<b>SECTION A</b>		
<b>SECTION B</b>	<b>1</b>	
	<b>2</b>	
	<b>3</b>	
<b>TOTAL</b>		

This document consists of **13** printed pages and **3** blank pages.

**SECTION A**

1. Fig. 1.1 shows the way of rotating vegetables.



**Fig. 1.1**

(a) (i) State the group of vegetables that is missing.

..... [1]

(ii) Describe why the leafy vegetables should be followed by root vegetables

..... [1]

(iii) Differentiate between subsistence and commercial farming

..... [2]

(b) Explain how soil type affects the amount of water needed by crops.

..... [2]

**[6 marks]**

2. (a) Describe the effect of using faulty farm implements without fixing them.  
.....  
.....  
..... [2]

(b) Explain how a farmer can protect tools from rust.  
.....  
.....  
.....  
..... [4]

[6 marks]

3. (a) Give **four** factors a farmer needs to consider before controlling pests and diseases.  
(i) .....  
(ii) .....  
(iii) .....  
(iv) ..... [4]

(b) Suggest how a farmer should get rid of left over chemical after spraying.  
.....  
..... [1]

[5 marks]

4. (a) State why soil is the greatest asset in Eswatini.  
.....  
..... [1]

(b) Outline any **four** ways a farmer can destroy the soil structure.

(i) .....

.....

(ii).....

.....

(iii).....

.....

(iv).....

..... [4]

(c) Suggest how a waterlogged soil can be reclaimed.

.....

..... [1]

[6 marks]

5. (a) State any **two** factor to consider when selecting a good site for a maize crib.

(i) .....

(ii) .....

[2]

(b) Describe a **sign** indicating that each crop is ready for harvesting:

(i) Dry maize: .....

.....

(ii) Groundnuts: .....

.....

[2]

(c) Explain why it is important to thoroughly dry grain crops.

.....

.....

..... [2]

[6 marks]

6. Fig. 6.1 shows the brooder and position of the chicks.



Fig. 6.1

(a) Explain the reason for the behavior of the chicks.

.....

.....

..... [2]

(b) Suggest any **two** reasons for keeping indigenous chickens.

(i) .....

(ii) .....

(iii) .....

(iv) ..... [4]

[6 marks]

7. (a) State any **two** ways of seed dispersal.

(i) .....

(ii) ..... [2]

(b) Give deficiency symptoms for each of the nutrients.

(i) Nitrogen:.....

(ii) Potassium:..... [2]

(c) Describe the fertilization process in plants.

.....  
.....  
.....  
..... [2]

[6 marks]

8. (a) Name a parasitic weed of maize

..... [1]

(b) State any **three** cultural control practices of pest and diseases.

(i) .....  
(ii) .....  
(ii) ..... [3]

(c) Explain integrated method of controlling pest and diseases

.....  
.....  
..... [2]

[6 marks]

9. (a) Describe any **two** factors to consider when buying rabbits

(i) .....  
.....  
(ii) .....  
..... [2]

(b) Explain the importance of high feed conversion ratio in rabbit production.

.....  
.....  
..... [2]

(c) Describe the fostering process in rabbits' production.

.....  
.....  
.....

[2]

[6 marks]

10. Fig. 10.1 shows the digestive system of a goat.

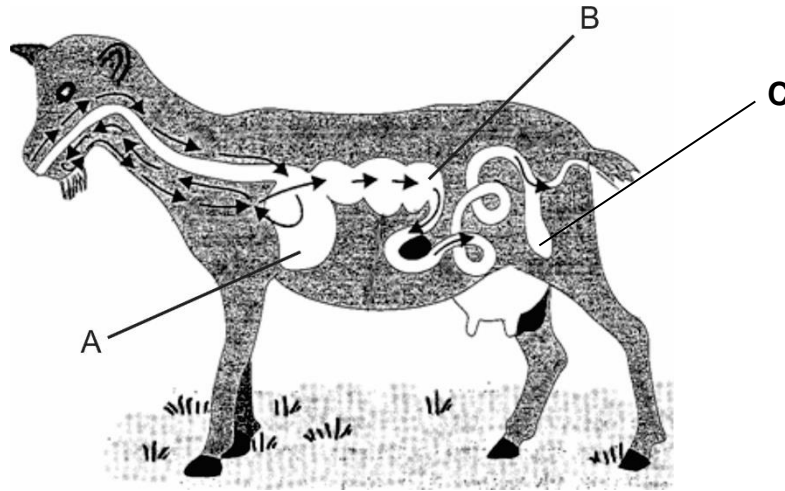


Fig. 10.1

(a) (i) Name the parts labeled A and B.

Part A .....

Part B .....

Part C ..... [3]

(ii) Describe regurgitation.

.....  
.....

[1]

(b) Discuss the process of castration.

.....  
.....  
.....

[2]

[6 marks]

11. (a) Name any **two** milk breed of cattle.

(i).....

(ii)..... [2]

(b) Give the shape of dairy cows.

..... [1]

(c) Suggest **two** importance of artificial insemination.

(i).....

.....

(ii).....

..... [2]

[5 marks]

12. (a) State **one** pasture management practices that prevent overgrazing.

..... [1]

(b) Outline the **three** steps of making hay

(i) .....

(ii) .....

(iii) ..... [3]

(c) Describe how burning can improve the pasture.

(i) .....

.....

(ii) .....

..... [2]

[6 marks]



**SECTION B****1. Vegetable Production (green beans)**

- (a) Discuss how the soil is prepared for planting green beans [5]  
(b) Explain the steps of planting green beans [5]  
(c) Explain the weeding process for bean [5]

**[15 marks]****2. Broiler Production**

- (a) Discuss how a broiler attacked by Newcastle disease can be recognized. [5]  
(b) Explain the preparation activities before the arrival of chicks [5]  
(c) Explain the feeding programme in broilers [5]

**[15 marks]****3. Management of agroforestry**

- (a) Discuss the establishment of a forest nursery [5]  
(b) Explain the application of inorganic fertilizer in fruit trees [5]  
(c) Explain the procedure of harvesting fruits [5]

**[15 marks]**





.....  
.....  
.....  
.....  
.....  
.....  
.....  
.....  
.....  
.....  
.....  
.....  
.....  
.....  
.....  
.....  
.....  
.....  
.....  
.....  
.....  
.....  
.....  
.....  
.....  
.....  
.....  
.....  
.....  
.....  
.....  
.....  
.....  
.....  
.....  
.....  
.....  
.....  
.....  
.....  
.....  
.....  
.....  
.....  
.....  
.....  
.....  
.....



**BLANK PAGE**

**BLANK PAGE**

**BLANK PAGE**

---

Permission to reproduce items where third-party owned material protected by copyright is included has been sought and cleared where possible. Every reasonable effort has been made by the publisher (ECESWA) to trace copyright holders but if any items requiring clearance have unwittingly been included, the publisher will be pleased to make amends at the earliest possible opportunity.